

8 Jubilee Avenue, Warriewood
www.focuswarriewood.com.au

Focus Warriewood is the
ultimate industrial estate for
flexibility and location.

focus
WARRIEWOOD



Focus Warriewood is a boutique industrial strata development comprised of two distinct levels, consisting of 16 units which amalgamate to over 3,600m² of industrial/warehouse space.

The site's strategic location is poised to take advantage of the continuing transformation of Warriewood into a major commercial/industrial hub.

Focus Warriewood has been designed to provide the ultimate flexibility for each individual user. Unit sizes range from 108m² to 500m² with an option of consolidating warehouses to achieve up to 2,000m² for an individual user.

Focus Warriewood has been designed to provide an abundance of natural sunlight throughout. Focus Warriewood has a streamlined appearance nestled into a natural escarpment dominated by native bushland and rocky outcrops.

The sun surf & sand of some of Sydney's finest beaches are only moments away, both Bayview & Mona Vale golf courses are within a five minutes drive.

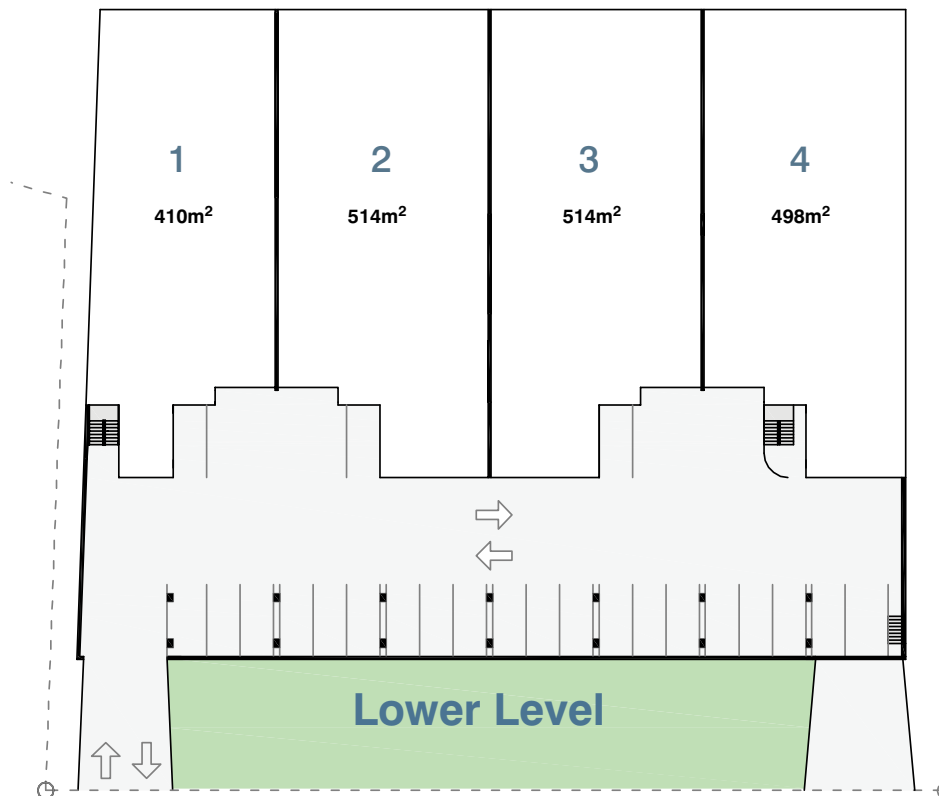
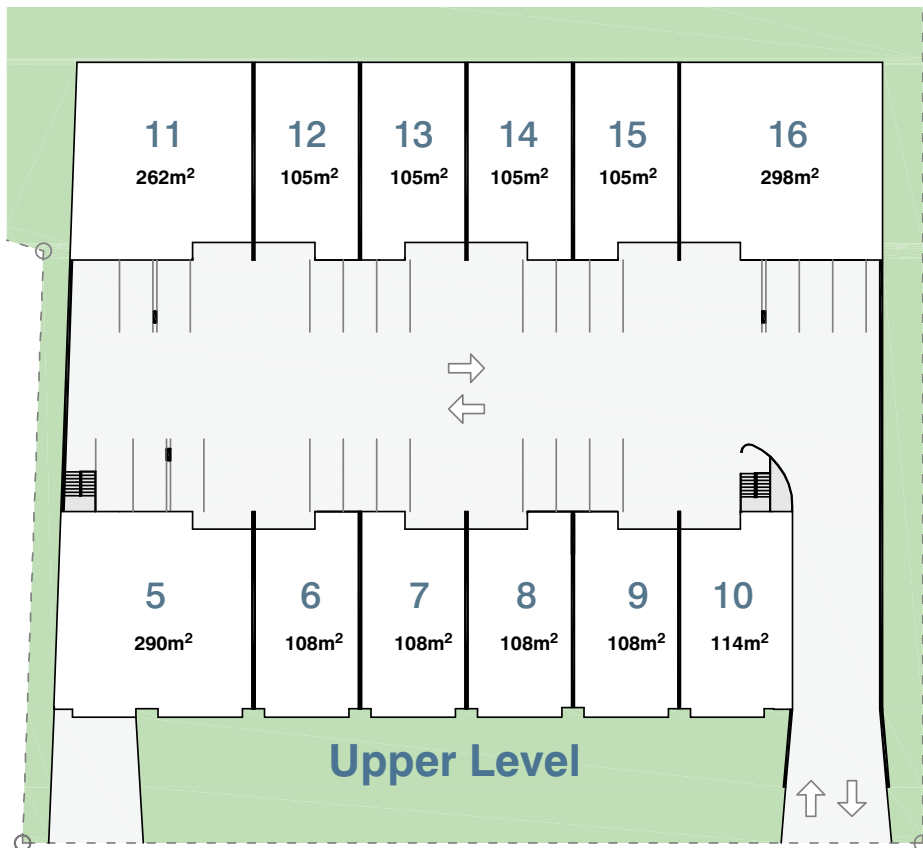
- Units from 108m² to 500m²
- Combine units to reach 2,000m²
- On-site parking with each unit
- Good truck access to each level
- Abundant natural light
- Small boutique development

**Industrial Units
Now Selling**
108m² to 2,000m²

For more information visit:
www.focuswarriewood.com.au

SHORE
MONA VALE
9979 8844

Nick Masselos
0419 993 978



JUBILEE AVENUE